

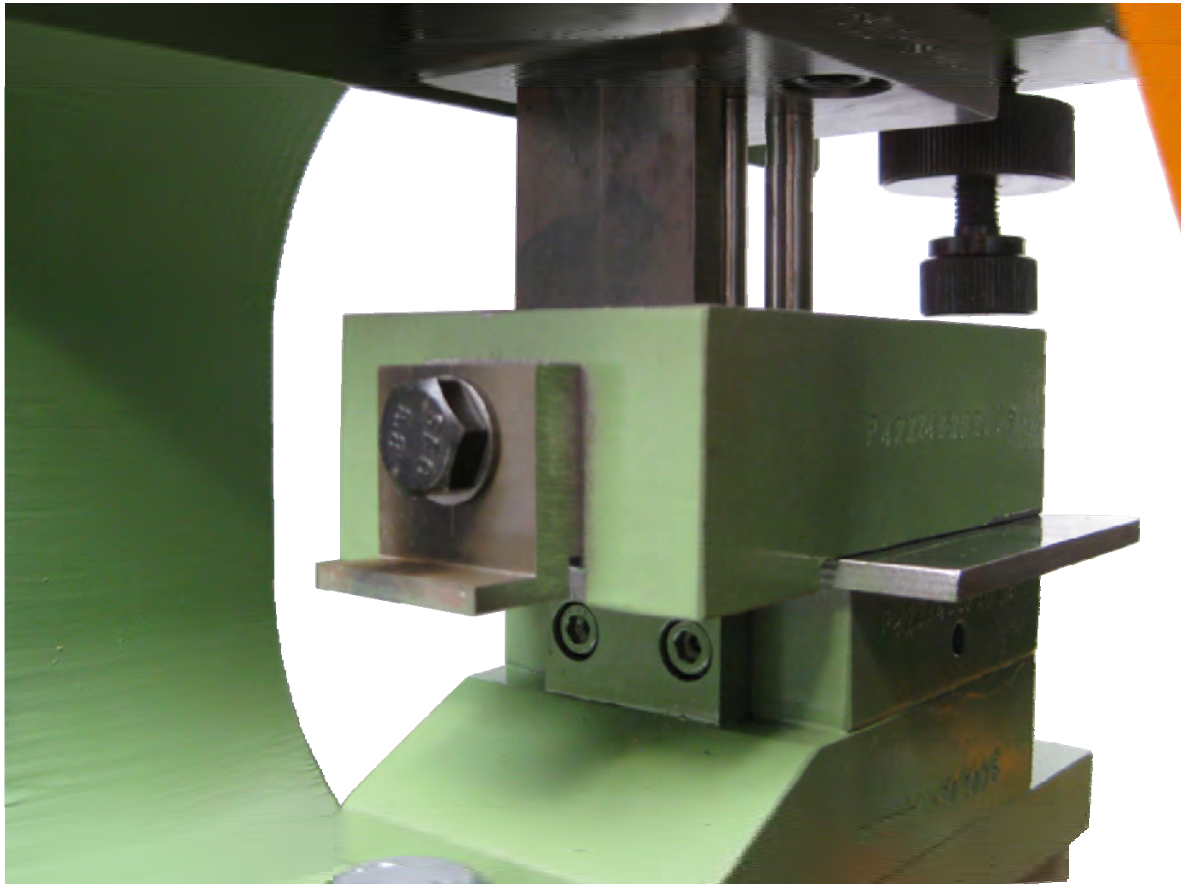


Peddinghaus

Peddinghaus Anlagen & Maschinen GmbH

Peddinghaus Anlagen & Maschinen GmbH
Hasslinghauser Str. 156 • D-58285 Gevelsberg
Tel. 02332-6646-50 • Fax 02332-6646-46

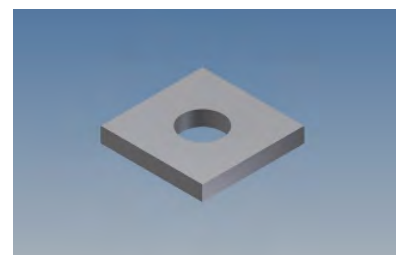
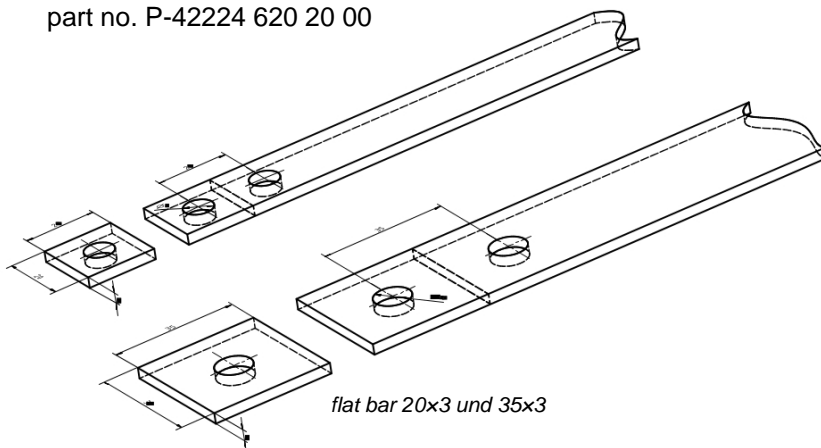
Punching attachment for producing shims



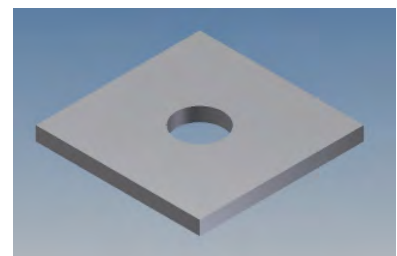
Punching machine Hydraulic 280

progressive punching attachment for producing shims
20x20x3mm - 8mm Ø hole and
35x35x3mm - 10mm Ø hole,
including adjustable flat bar guide
and exchangeable punches and dies for both shims
complete

part no. P-42224 620 20 00



shim 20x20x3mm - Ø 8mm



shim 35x35x3mm - Ø 10mm